

# niftylift

# HR21

## HYBRID AWD



(A) 20.8m  
68ft 6in



(B) 18.8m  
62ft



(C) 12.8m  
42ft



225kg  
500lbs



1.8m x 0.85m  
5ft 11in x 2ft 9in



150°



100°



(D) 2.15m  
7ft



(F) 2.27m  
7ft 5in



(H) 5.3m  
17ft 5in



(J) 6.7m  
22ft



4.5km/h  
2.8mph



4m  
13ft



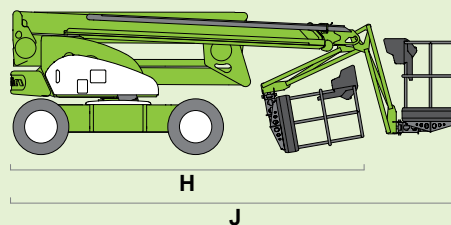
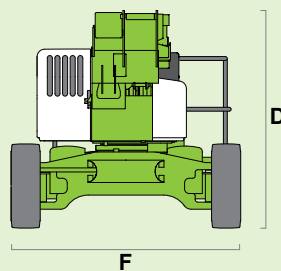
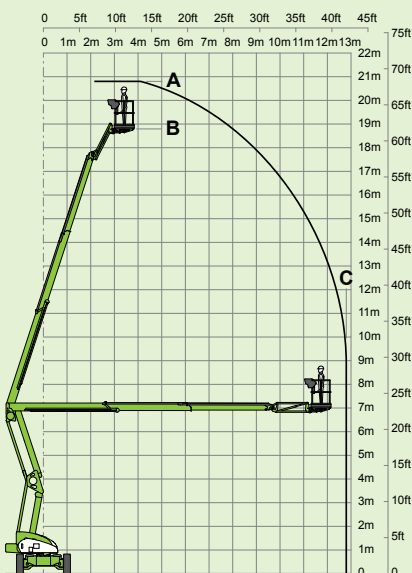
40%  
22°



6500kg  
14330lbs



HYBRID



SIOPS® toughcage

[niftylift.com.au](http://niftylift.com.au)

NIFTYLIFT PTY  
11 Kennington Drive,  
Tomago,  
NSW 2322,  
Australia  
[www.niftylift.com.au](http://www.niftylift.com.au)  
e-mail: [jking@niftylift.com.au](mailto:jking@niftylift.com.au)  
Tel.: +61 (0) 2 4964 9765  
Fax: +61 (0) 2 4964 9714



IS-101