

# niftylift

# HR15N



(A)

15.5m  
51ft



(B)

13.5m  
44ft



(C)

9.7m  
32ft



225kg  
500lbs



1.5m x 0.8m  
4ft 11in x 2ft 8in



150°



180°



(D)

1.99m  
6ft 6in



(F)

1.5m  
4ft 11in



(H)

4.93m  
16ft 2in



(J)

6.4m  
21ft



3.5km/h  
2.2mph



3.5m  
11ft 6in



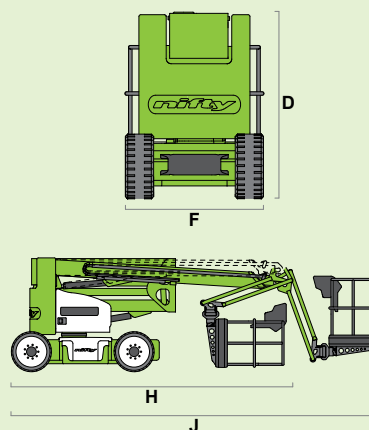
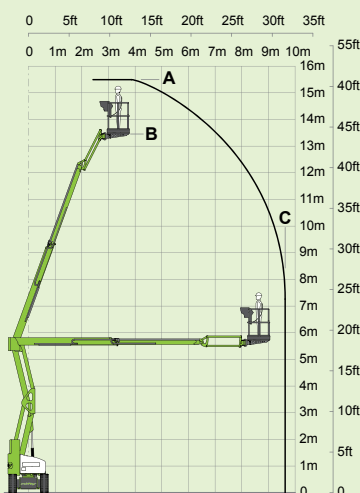
25%  
14°



7250kg  
15980lbs



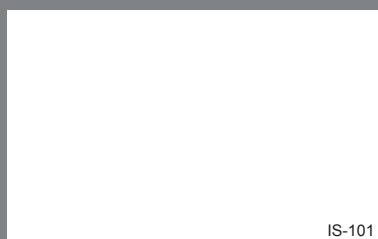
**HYBRID**



**SiOPS® toughcage**

**niftylift.com.au**

**NIFTYLIFT PTY**  
11 Kennington Drive,  
Tomago,  
NSW 2322,  
Australia  
www.niftylift.com.au  
e-mail: jking@niftylift.com.au  
Tel.: +61 (0) 2 4964 9765  
Fax: +61 (0) 2 4964 9714



IS-101